



Nagrik Shikshan Sanstha's College of Commerce & Economics,

M.P. Mills Compound, Behind AC Market, Tardeo, Mumbai 400034,
Tel. 022 23510203 Website : nsseducation.org,
Re-accredited 'B' Grade by NAAC



NATIONAL ASSESSMENT AND ACCREDITATION COUNCIL (NAAC)

*An Autonomous Institution of the University Grants Commission
P.O. Box No. 1075, Opp : NLSIU, Nagarbhavi, Bangalore - 560 072 India*

ANNUAL QUALITY ASSURANCE REPORT (AQAR)

YEAR 2012-13

• *Submitted by* •

Dr. (Mrs.) Hemangi Bhagwat
Principal

Prof. Raj Soshte
(IQAC Co-ordinator)

Online Submitted to NAAC on 28th Dec., 2013

office copy.

**NSS COLLEGE OF COMMERCE AND ECONOMICS,
TARDEO, MUMBAI-400 034**

(NAAC RE-ACCREDITED AND PERMENANTLY AFFILIATED TO UNIVERSITY OF MUMBAI)

Annual Quality Assurance Report (AQAR)

YEAR 2012-13

Submitted online to

NATIONAL ASSESSMENT AND ACCREDITATION COUNCIL (NAAC)

An Autonomous Institution of the University Grants Commission
P. O. Box. No. 1075, Opp: NLSIU, Nagarbhavi, Bangalore - 560 072 India

Submitted by

Dr.(Mrs). Hemangi Bhagwat

(Principal)



Prof. Raj Soshte

(IQAC Co-ordinator)

On

28th Dec.,2013



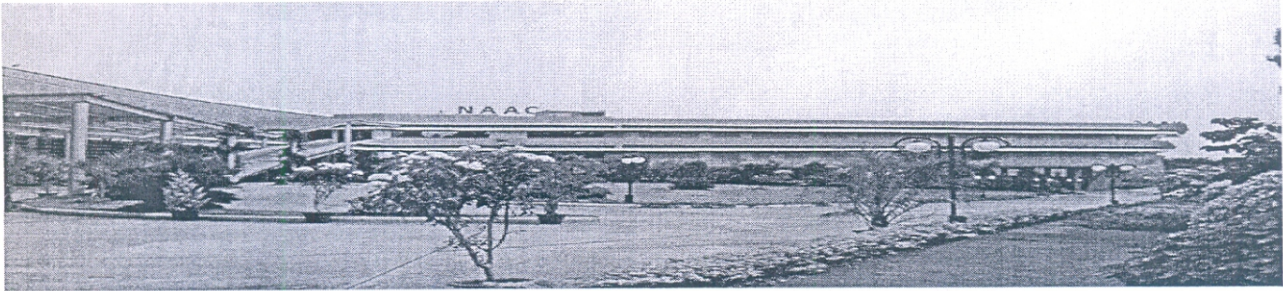
NATIONAL ASSESSMENT AND ACCREDITATION COUNCIL

राष्ट्रीय मूल्यांकन एवं प्रत्यायन परिषद

(An Autonomous Institution of the University Grants Commission)

विश्वविद्यालय अनुदान आयोग का स्वायत्त संस्थान

ABOUT US ASSESSMENT AND ACCREDITATION ACTIVITIES LIBRARY NAAC PUBLICATIONS COLLABORATIONS APPLY ONLINE E-MAIL



Activities

- Universities / Colleges
- Peer Team Visits
- List of Assessors
- NAAC sponsored seminars
- IQAC
- AQAR
- SLQAC

Home + AQAR

AQAR

NAAC has revised the Guidelines for the Creation of the Internal Quality Assurance Cell (IQAC) and Submission of Annual Quality Assurance Report (AQAR) in Accredited Institutions. The revised guidelines will come into effect from 1st January 2014.

The Higher Education institutions which are submitting the Annual Quality Assurance Report (AQAR) from 01-01-2014 onwards need to submit in the revised format with effect from 1st January 2014. The Guidelines for the Creation of the Internal Quality Assurance Cell (IQAC) and Submission of Annual Quality Assurance Report (AQAR) in Accredited Institutions is placed below in word file.

The NAAC Accredited institutions need to submit only the soft copy as word file (.doc/.docx) through an e-mail naac.aqar@gmail.com. The file name needs to be submitted with Track ID of the institution and College Name. For example MHC0GN16601-Samudra Arts and Science College, Taliamegu, Maharashtra.doc. The Higher Education institutions need not submit the printed/hard copy to NAAC. The acknowledgements would be sent to the institutions through e-mail. For more details refer guidelines.

The Revised IQAC Guideline link

AQAR ONLINE...

Those Institutions who would like to submit the online AQAR in the existing format may submit before 25-12-2013.

The on-line questionnaires for the annual report format to be submitted by the IQAC every year. The quality sustenance effort undertaken by the institution which would reflect the quality management strategies adopted. Broad areas cover all relevant quality enhancement efforts. It is envisaged that the response pattern by the institution would be a self learning exercise in quality sustenance effort undertaken by the institutions. Based on the quality profile created institution, strategies can be created to achieve the declared goals and objectives. NAAC will henceforth accept only online Annual Quality Assurance Reports (AQAR).

Note

In order to enable institutions to have a preview of the questionnaire, please see PDF version

- When answering this questionnaire, please ensure that no question is omitted in order to have a holistic analysis.
- This survey does not allow you to have access to the filled-up form, i.e., once the 'done' button is clicked, the information will automatically reach NAAC.
- In case you wish to retain printouts of the filled-up questionnaire, please take a printout of each completed page before proceeding further.



12/28/2013

AQAR | Welcome to National Assessme...

[Disclaimer](#) [Help](#) [Site Map](#) [Screen Reader Access](#) [Copyright Policy](#) [Hyperlinking Policy](#) [Privacy Policy](#) [Terms & Conditions](#) [Related Websites](#) [Accessibility Options](#)

Site is designed and hosted by : National Informatics Centre

Content owned and managed by : The Director, National Assessment and Accreditation Council, P. O. Box No. 1075, Nagarbhavi, Bangalore -560072, Karnataka, India . Phone. +91-80-23210261

No. of Visitors : **991048**

Last Updated on : **21/12/13**

NAAC Institutional Quality Sustenance and Development Survey[Exit this survey](#)

2.

1. Kindly provide the details of the institution

Name of Institution:

Year of Establishment of the Institution:

Address Line 1:

Address Line 2:

City/Town:

State:

Postal Code:

Email Address:

2. NAAC Accreditation/ Reaccreditation Details

Year of Accreditation/ Reaccreditation:

Current Grade:

CGPA:

3. Institutional Status **4. Contact Person Details**

Name of Head of Institution:

Contact Phone:

12/28/2013

NAAC Institutional Quality Sustenance ...

Email:

Website URL:

Name of IQAC Co-ordinator:

Email:

Powered by **SurveyMonkey**
Check out our [sample surveys](#) and create your own now!

NAAC Institutional Quality Sustenance and Development Survey

[Exit this survey](#)

3.

SECTION I

This section is related to institutional goals, vision and mission, academic programmes and activities, strategies and action plans for institution building.

5. Number of academic programmes existing (Enter a number; 0 for nil)

Undergraduate (BA/B.Sc./B.Com etc.)	<input type="text" value="01"/>
Post Graduate (MA/M.Sc./M.Com etc.)	<input type="text" value="01"/>
Research Programmes (M.Phil/P.hD)	<input type="text" value="00"/>
Certificate Programmes	<input type="text" value="00"/>
Professional Programmes (B.Tech/M.Tech/B.Ed/M.Ed/Medicine/Pharmacy/Paramedical/Nursing etc)	<input type="text" value="00"/>
Other value added programmes	<input type="text" value="00"/>
Any other programme offered (Specify)	<input type="text" value="00"/>

6. Details on Programme Development (Enter a number; 0 for nil)

New programmes added during the year	<input type="text" value="00"/>
New programmes designed	<input type="text" value="00"/>
Programmes under revision	<input type="text" value="00"/>
Interdepartmental collaborative programmes	<input type="text" value="00"/>
Inter institutional collaborative programmes	<input type="text" value="00"/>
Number of review committee recommendations implemented (Total)	<input type="text" value="00"/>
Number of NAAC	<input type="text" value="06"/>

12/28/2013

NAAC Institutional Quality Sustenance ...

peer team

recommendations
implemented

Number of UGC/any
other expert
committee
recommendations
implemented

04

Number of review
committee

00

recommendation
under implementation

Number of NAAC
peer team

03

recommendations
under implementation

Number of UGC/ any
other expert
committee

00

recommendations
under implementation

7. Faculty Details (Enter a number; 0 for nil)

Total faculty strength
required as per
norms for all
programmes

13

Total faculty on rolls

13

Faculty added during
the year

01

Faculty positions
vacant

01

Faculty left during the
year

00

Total number of
visiting faculty

02

Total number of guest
faculty

00

8. Qualification of Faculty

PhD and Above

02

MPhil

03

Masters

13

Any other (Specify)

02

9. Faculty qualification improvement

PhD awarded to existing faculty	<input type="text" value="00"/>
MPhil awarded to existing faculty	<input type="text" value="00"/>
Any other degree awarded to existing faculty	<input type="text" value="00"/>

10. Administrative Staff Details (Enter a number; 0 for nil)

Administrative staff (total sanctioned)	<input type="text" value="15"/>
Administrative staff (Actual strength)	<input type="text" value="13"/>
Added during the year of reporting	<input type="text" value="03"/>
Left during the year	<input type="text" value="00"/>
Number of posts vacant	<input type="text" value="02"/>

11. Technical Support Staff Details (Enter a number; 0 for nil)

Technical Support Staff (Total sanctioned strength)	<input type="text" value="00"/>
Technical Support Staff (Actual strength)	<input type="text" value="00"/>
Added during the year	<input type="text" value="00"/>
Left during the year	<input type="text" value="00"/>
Number of posts vacant	<input type="text" value="00"/>

Prev

Next

Powered by **SurveyMonkey**
Check out our [sample surveys](#) and create your own now!

NAAC Institutional Quality Sustenance and Development Survey

Exit this survey

4.

SECTION II

This section surveys the quality sustenance and development activities during the year taken up by IQAC.

It reflects quality management structure, strategies, and processes which would enhance academic quality of the institution as perceived by faculty, students, alumni, and other stakeholders (social perception of the institution) inline with the vision, mission and goals of the institution.

12. Establishment details

Year of establishment of IQAC

DD	MM	YYYY
<input type="text" value="12"/>	<input type="text" value="05"/>	<input type="text" value="2006"/>

13. Composition of IQAC (Enter a number; 0 for nil)

Number of IQAC members	<input type="text" value="12"/>
Number of Alumni in IQAC	<input type="text" value="00"/>
Number of Students in IQAC	<input type="text" value="00"/>
Number of Faculty in IQAC	<input type="text" value="07"/>
Number of Administrative Staff in IQAC	<input type="text" value="01"/>
Number of Technical Staff in IQAC	<input type="text" value="01"/>
Number of Management Representatives	<input type="text" value="02"/>

12/28/2013

NAAC Institutional Quality Sustenance ...

Number of External experts in IQAC

Number of any other stakeholder and community representatives

14. IQAC Meetings

Number of IQAC meetings held during the year

15. Whether Calendar of activities of IQAC formulated for the academic year

16. IQAC Plans for Development (Enter a number; 0 for nil)

Number of academic programmes proposed

Number of value added programmes proposed

Number of skill oriented programmes proposed

Number of faculty competency and development programmes proposed

Number of other staff development programmes proposed

Number of student mentoring programmes proposed

Number of co-curricular activities proposed

12/28/2013

NAAC Institutional Quality Sustenance ...

Number of inter departmental cooperative schemes proposed	<input type="text" value="00"/>
Number of community extension programmes proposed	<input type="text" value="02"/>
Any other programmes proposed (Specify)	<input type="text" value="00"/>

17. IQAC Plans for development & Implementation (Enter a number; 0 for nil)

Number of academic programmes implemented	<input type="text" value="02"/>
Number of value added programmes implemented	<input type="text" value="00"/>
Number of skill oriented programmes implemented	<input type="text" value="00"/>
Number of faculty competency and development programmes implemented	<input type="text" value="00"/>
Number of other staff development programmes implemented	<input type="text" value="00"/>
Number of student mentoring programmes implemented	<input type="text" value="01"/>
Number of co-curricular activities implemented	<input type="text" value="00"/>
Number of inter departmental cooperative programs implemented	<input type="text" value="00"/>
Number of community extension	<input type="text" value="02"/>

12/28/2013

NAAC Institutional Quality Sustenance ...

programmes
implemented

Any other
programmes
suggested that are
implemented
(Specify)

00

18. IQAC Seminars and Conferences (Enter a number; 0 for nil)

Number of seminars/
conferences/
workshops organized
by IQAC within the
institution

00

Number of participants
from the institution

00

Number of participants
from outside

00

Number of external
experts invited

00

Number of external
conferences/seminars/
workshops on
institutional quality
attended

00

Number of events
conducted with IQACs
of other institutions as
colloborative programes

00

19. Did IQAC receive any funding from UGC during the year ?

Yes

No

**20. If the response to Qn. 18 is Yes, please provide the amount received from UGC -
(Input 0 - if NA/NIL-) Any other source including internal financial support from the
management (Specify amount)**

Amount Received
from UGC

00

Amount Received
from any other

00

12/28/2013

NAAC Institutional Quality Sustenance ...

source including the
college management

21. Any significant contribution made by IQAC on quality enhancement during current year (Please provide details in bullet format)

competition, educational tours etc.	▲
5. Guidance to teacher for Career Advancement	▼
Scheme and preparation of AP	

Prev

Next

Powered by **SurveyMonkey**

Check out our [sample surveys](#) and create your own now!

NAAC Institutional Quality Sustenance and Development Survey

Exit this survey

5.

SECTION III

In this section the events, activities, and outputs in the field of research and academic areas are being surveyed.

Please enter a positive number.

22. Academic Programmes

Number of new academic programmes developed or designed by faculty

Number of faculty members involved in curriculam restructuring/revision/syllabus development

Number of programmes in which evaluation process reformation taken up and implemented

Number of active teaching days during the current academic year

Average percentage of attendance of students

Percentage of classes engaged by guest faculty and temporary teachers

Number of self financed programmes offered

Number of aided programmes offered

Number of programmes discontinued during the year

23. Whether any systematic student feedback mechanism is in place ?

Yes

24. Feedback Details (If answer to Question 20 is Yes)

Percentage of courses where student feedback is taken

25. Is feedback for improvement provided to the faculty?

Yes

! Please enter a positive number/0 if NA or Nil.

26. Faculty Research, Projects, and Publication details for the year

Number of major research projects undertaken during the year

Number of minor research projects undertaken during the year

Number of major ongoing projects

Number of minor ongoing projects

Number of major projects completed

Number of minor projects completed

Number of major project proposals submitted for external funding

Number of minor project proposals submitted for external funding

Number of research publications in peer reviewed journals

Number of research publications in international peer reviewed journals

12/28/2013

NAAC Institutional Quality Sustenance ...

Number of research publications in national peer reviewed journals	03
Number of research papers accepted for publication in international peer reviewed journals	01
Number of research papers accepted for publication in national peer reviewed journals	04
Average of impact factor of publications reported	00
Number of books published	00
Number of edited books published	00
Number of books (single authored) published	00
Number of books (coauthored) published	00
Numbers of conferences attended by faculty	21
Number of international conferences attended	05
Number of national conferences attended	11
Number of papers presented in conferences	18
Number of papers presented in international conferences	04
Number of papers presented in national conferences	10
Number of conferences organized by the institution	01
Number of faculty acted as experts resource persons	02
Number of faculty acted as experts resource	00

12/28/2013

NAAC Institutional Quality Sustenance ...

persons - international

Number of faculty acted
as experts resource

00

persons- national

Number of collaborations
with international
institutions

00

Number of collaborations
with national institutions

00

Number of linkages
created during the year

00

Total budget for research
for current year as a
percentage of total
institution budget

1

Amount of external
research funding received
in the year

RS.12000

Number of patents
received in the year

00

Number of patents applied
for in the year

00

Number of research
awards/ recognitions
received by faculty and
research fellows of the
institute in the year

02

Number of PhDs awarded
during the year

00

Percentage of faculty
members invited as
external experts/resource
persons/reviewers/referees
or any other significant
research activities

08

Prev

Next

Powered by **SurveyMonkey**

Check out our [sample surveys](#) and create your own now!

NAAC Institutional Quality Sustenance and Development Survey[Exit this survey](#)

6.

SECTION IV

This section deals with Student Mentoring and Support System existing in the institution. This includes student activities, mentoring, and opportunities for development and inclusive practices.

27. Student Details and Support Mechanisms

The total intake of students for various courses (Sanctioned)	<input type="text" value="1320"/>
Actual enrollment during the year	<input type="text" value="1155"/>
Student dropout percentage during the year	<input type="text" value="3.7"/>
Success percentage in the final examination across the courses	<input type="text" value="74"/>
Number of academic distinctions in the final examination and percentage	<input type="text" value="17"/>
Number of students who got admitted to institutions of national importance	<input type="text" value="00"/>
Number of students admitted to institutions abroad	<input type="text" value="00"/>
Number of students qualified in UGC NET/ SET	<input type="text" value="00"/>
Number of students qualified GATE/ CAT/	<input type="text" value="00"/>

NAAC Institutional Quality Sustenance and Development Survey

Exit this survey

6.

SECTION IV

This section deals with Student Mentoring and Support System existing in the institution. This includes student activities, mentoring, and opportunities for development and inclusive practices.

27. Student Details and Support Mechanisms

The total intake of students for various courses (Sanctioned)	<input type="text" value="1320"/>
Actual enrollment during the year	<input type="text" value="1155"/>
Student dropout percentage during the year	<input type="text" value="3.7"/>
Success percentage in the final examination across the courses	<input type="text" value="74"/>
Number of academic distinctions in the final examination and percentage	<input type="text" value="17"/>
Number of students who got admitted to institutions of national importance	<input type="text" value="00"/>
Number of students admitted to institutions abroad	<input type="text" value="00"/>
Number of students qualified in UGC NET/ SET	<input type="text" value="00"/>
Number of students qualified GATE/ CAT/	<input type="text" value="00"/>

other examination
(Specify)

28. Does student support mechanism exist for coaching for competitive examinations?

Yes ▾

29. Student participation, if response is yes to Qn. 27

Number of students participated

30. Does student counselling and guidance service exist ?

Yes ▾

31. Student participation, if answer to Qn. 29 is yes

Number of students participated

32. Career Guidance

Number of career guidance programmes organized

Percentage of students participated in career guidance programmes

33. Is there provision for campus placement?

No ▾

34. If yes to Qn. 32

Number of students participated in campus selection programmes

Number of students selected for

12/28/2013

placement during the year

35. Does gender sensitization program exist ?

Yes

36. If Answer is Yes to Qn 34

Number of programmes organized

07

37. Student activities

Number of students participated in external cultural events

02

Number of prizes won by students in external cultural events

07

Number of cultural events conducted by the institute for the students

06

Number of students participated in international sports and games events

00

Number of students participated in national level sports and games events

00

Number of students participated in state level sports and games events

00

Number of students participated in university level sports and games events

43

Number of prizes won by students in

00

12/28/2013

NAAC Institutional Quality Sustenance ...

international sports
and games events

Number of prizes won
by students in
national level sports
and games events

00

Number of prizes won
by students in state
level sports and
games events

00

Number of prizes won
by students in
university level sports
and games events

00

Number of sports and
games events
conducted by the
institute for the
students

07

38. Composition of students

Percentage of
Scheduled Caste

19.15

Percentage of
Scheduled Tribe

0.096

Percentage of other
backward
communities

21.17

Percentage of women
students

46.87

Percentage of
physically challenged

00

Percentage of rural
students

00

Percentage of urban
students

100

39. Scholarships and Financial Support

Number of students
availing financial support

00

12/28/2013

NAAC Institutional Quality Sustenance ...

Amount disbursed as financial support from the institution

00

Number of students awarded scholarship from the institution

309

Number of students received notable national/international achievements/recognition

00

40. Student initiatives

Number of community upliftment programmes initiated by students

13

Number of literary programmes initiated by students

11

Number of social action initiatives based on science / environment initiated by students

02

Number of student research initiatives

02

Prev

Next

Powered by **SurveyMonkey**

Check out our [sample surveys](#) and create your own now!

NAAC Institutional Quality Sustenance and Development Survey

[Exit this survey](#)

7.

SECTION V

This section surveys the Governance and Innovation at the institution related to quality management. The educational management strategies adopted and in practice for achieving the objectives are focussed.

41. Whether perspective plan for overall developmental activities is created ?

- Yes
- No



42. If the answer for Qn. 40 is Yes, is the plan implemented and monitored ?

- Yes
- No

43. Whether benchmarking is created for institutional quality management efforts ?

- Yes
- No

44. If the answer to Question 42 is Yes, please list the benchmarking in various areas of development in bullet format

1.Overall growth in academic results	
2.Remedial coaching for SC/ST/OBC & minority students	

45. Is a Management Information System (MIS) in place ?

- Yes
- No

46. If answer to question 44 is Yes, please provide details of MIS applied to

- 1. Administrative procedures including finance
- 2. Student admission
- 3. Student records
- 4. Evaluation and examination procedures
- 5. Research administration
- 6. Others

(enter the respective details corresponding to the serial numbers)

NIL

47. Existence of learning resource management

	Yes	No
e-database in library	✓	
ICT and smartclass room		✓
e-learning sources (e-Books, e-Journals)	✓	
Production of teaching modules		✓
Interactive learning facilities		✓

48. Internal resource mobilization : Kindly provide the amount contributed

Research	<input type="text" value="00"/>
Consultancy and training	<input type="text" value="00"/>
Student contribution	<input type="text" value="00"/>
Alumni contribution	<input type="text" value="00"/>
Wellwishers	<input type="text" value="00"/>

49. Infrastructure and welfare spending: Please specify the amount

Amount spent for infrastructure development	<input type="text" value="65,750"/>
Amount spent for	<input type="text" value="4,62,700"/>

12/28/2013

NAAC Institutional Quality Sustenance ...

student welfare

Amount spent for
staff welfare

51,165

50. Is delegation of authority practiced

Yes

No

51. Does grievance redressal cell exist ?

Yes

No

Faculty

Students

Staff

52. Grievances received from faculty and resolved (Enter a number; 0 for nil)

Number of grievances
received

00

Number of grievances
resolved

00

53. Number of grievances received from students and resolved (Enter a number; 0 for nil)

Number of grievances
received

00

Number of grievances
resolved

00

54. Number of grievances received from other staff members and resolved (Enter a number; 0 for nil)

Number of grievances
received

00

Number of grievances
resolved

00

55. Has the institution conducted any SWOT analysis during the year

Yes

No

56. The SWOT analysis was done by internal or by external agency

Internal

External

57. Kindly provide three identified strengths from SWOT Analysis (in bullet format)

metropolitan city
4. Active participation of students in cultural , sports , NSS & WDC activities etc.

58. Kindly provide three identified weaknesses from the SWOT analysis (in bullet format)

1. Inadequate collaborative activity in teaching and research.
2. Shortage of space for co-curricular activities

59. Kindly provide two opportunities identified from the SWOT analysis (in bullet format)

1. To establish Industry- Institute linkages
2. Scope of involvement of Alumni in resource mobilization

60. Kindly provide two identified challenges/threats from SWOT analysis (in bullet format)

1. Preparing students to face the challenges of 21st Century
2. Developing communication skills in English and

61. Identify any significant progress made by the institution towards achieving the goals and objectives during the year (list below in bullet format)

1. Introduced English Speaking course
2. Introduced M.Com. Accountancy & Management course

62. How do you perceive the role of NAAC in the quality development of your institution (Suggestions in bullet format to be given below)

2/28/2013

NAAC Institutional Quality Sustenance ...

counselling etc.
3.Active participation of all stakeholders of institute
for quality evaluation, promotion and sustence.

Prev

Next

Powered by **SurveyMonkey**
Check out our [sample surveys](#) and create your own now!

NAAC Institutional Quality Sustenance and Development Survey

[Exit this survey](#)

8.

CONCLUDING REMARKS

This exercise is intended to make a self analysis of the quality development of the institution during the year. The perspective plan and implementation for every year is to be documented and analysed to get a cumulative index for the period of accreditation and reaccreditation. Any substantial changes / initiative in this direction is to be separately listed. The best practices in various areas can be listed as a separate annexure. The data will be used to create a quality profile based on the total score index arrived at and this would help to map the institutions' strengths and areas of improvement.

NAAC will provide feedback and a quality profile based on analysis of your inputs if you desire so.

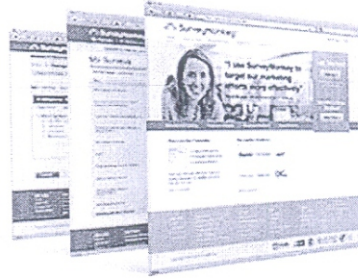
Thank you for your participation.

[Prev](#)[Done](#)

Powered by **SurveyMonkey**
Check out our [sample surveys](#) and create your own now!

Thanks for completing this survey. Now create your own—it's free, quick & easy!

- Create free surveys in just a few minutes
- Ask questions in over 15 formats
(configured for you and ready to go!)
- Get answers to any type of question



Register with SurveyMonkey today!

[Sign Up FREE »](#)